

-HANNAM- DESIGN

A VISUAL REFERENCE OF HANNAM DESIGN'S PRIMARY DESIGN PROCESS

The following pages provide a reference to the process Hannam Design will begin following after the initial consultation has been completed. This reference is assembled to provide you a visual of the process and documents that may be included in the work Hannam Design will provide for your project and goal needs.

This is a reference for the primary phase, also called the discovery phase of design. Experience has proven this phase is valuable and appreciated by past clients. (and even non-clients whom have discovered this process having suffered through one that was dis-jointed or DIY) This process, while it may seem linear, is very organic and will be customized to you, broken down into stages and needs to ensure it will align with your project. No two projects or people are alike and that is why all new clients begin with an initial consultation to ensure necessary blocks are set for a solid foundation for work to come.

Evidence has supported that any next step in this discovery process will be an investment and add value to your project. Providing you education and experience to support all future decisions. Once this primary/discovery process is complete, Hannam Design will move you through additional stages necessary for design, selection, ordering, building and implementation needs your project includes.

Proposal:

Following the initial consultation, you will receive a proposal relevant to your projects needs and work discussed in your initial consultation. This proposal helps organize and establish next steps to support your project and family's wishes. It will include a project scope, customized deliverables, and future steps. Hannam Design takes the initial consultation and project analysis into consideration while competing this proposal and works hard to align it on a professional and personal level. However, if there are areas you feel you wish to adjust, you can do so prior to accepting. Accepting the proposal will begin the primary process that follows. This process is shown following the proposal example. All or parts may be used for your project, in a customized format.

-HANNAM- DESIGN

interior solutions for your home needs

Project

Yenny Main Level Remodel

Budget

70K

Resources Assembled to Date

initial consultation, onsite photos, and dimensions

Project Scope and Objective

Clients Jack and Jill, are in the beginning stages of a home remodel. They are planning to remodel the kitchen and adjacent spaces to update function and aesthetics to better fit the home and their family's needs. They have completed an initial consult in the home and discussed considerations for their project goals and desires. They are open to all levels of re-design so long as they provide responsible solutions for their investment and identified needs. No contractor or sub-contractors have been designated for the work but will be assigned and discussed as the project unfolds and duties are defined. The clients have requested Hannam Design to consult and provide conceptual layouts to uncover the potential that their home has, along with vision boards to see how existing materials could fit an updated look. This session will provide interior, architectural layouts and begin to identify an overall design concept through the deliverables provided in this proposal. The kitchen will be the primary focus for this work. Maximizing use and minimizing wasted space will be a critical component of this work. Also, ensuring each layout can support and provide an increased functional use for ALL family members. Megan will work to provide an offering of solutions that range in complexity to ensure the clients are educated and exposed to the maximum potential for their daily life and home. Consultation services only are being considered at this time and as the project unfolds and details are considered, more specific roles of sourcing and implementation will be discussed.

Date: 4/13/21

Client Information:

Jack and Jill Yenny
4823 2nd Ave, Cedar Falls

-HANNAM- DESIGN

interior solutions for your home needs

Session Focus

conceptual, architectural, layouts

Deliverables

see project scope for identified objectives

- draft space footprint and complete a space to goal analysis necessary for space planning and project development
- draft all relevant and potential layouts to show space usage and structural remodel necessary for kitchen remodel
- *low to high level re-design involvement will be considered to showcase all space potential for all drawings*
- complete conceptual sketches or assemble digital references to support the proposed layouts assemble and present
- complete digital vision boards to showcase relevant finishes and fixtures to fit the design
- assemble preliminary materials budget for the proposed layouts
- all correspondence necessary to complete session one o in person apt to review conceptual layouts

Total: 18 hours

all hours are billed out at \$ 90/hour

Instructions to proceed

To approve this work and move forward, please submit a 50% Deposit of the total with a signed copy of this page. Please mail checks to the address provided below. Balance is due upon presentation.

I approve the work as outlined above and wish to proceed.

Signature: _____ Date: _____

____ I understand all drawings completed and provided are under the ownership of Hannam Design and all rights remain with Hannam Design LLC. A drawing release will be provided upon full payment for client use.

____ I agree to photo release of jobsite photos taken by MHDC and I understand all photos and completed design work may use these for marketing or future and client project needs.

Future Deliverables

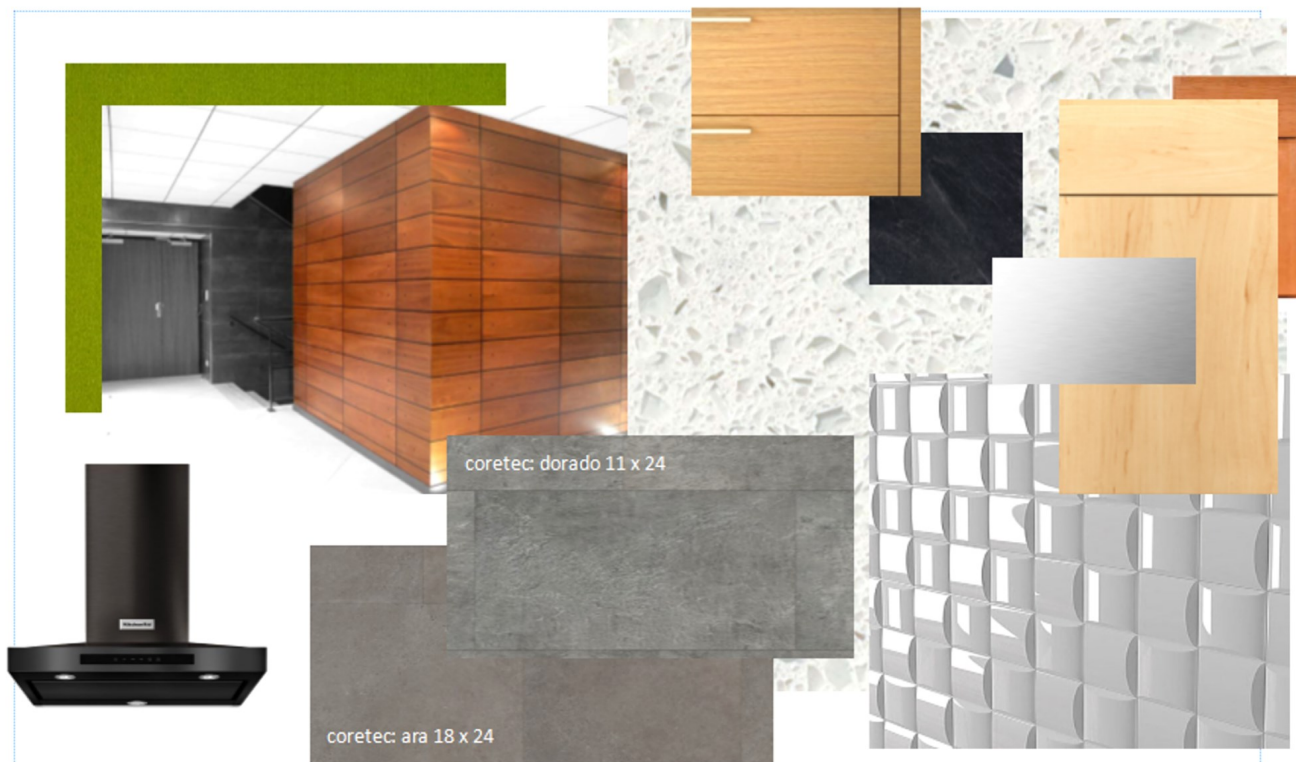
the following are possible deliverables that may be necessary to implement your project in addition to the work proposed above. Hours noted are estimates only for planning purposes. Actual work may vary.

- Input main layout and begin first round of technical drawings for cabinetry design (8-12hours)
- Complete a workbook session for final feasibility and estimating approval with identified workmen (7-9 hours)
- Assemble hand samples as needed for the space (tbd or included with signed sales agreement)
- Apt at showrooms for final finish and fixture selection (tbd or included with signed sales agreement)
- Fixture & other materials sourcing or specifications list (tbd or included with signed sales agreement)

EXAMPLE ONLY

Vision boards:

Vision boards give you an understanding of the spaces visual and aesthetical potential. They will educate you on applicable materials and finishes for your project. All materials shown in this presentation or on the boards will have been selected specifically for your project and are considered in the overall concept and budget that will be rendered. Depending on the scope of your project, these boards may be tactile or digital. These boards will provide support for 2d drawings and may be used early in the conceptual phase OR later to drive

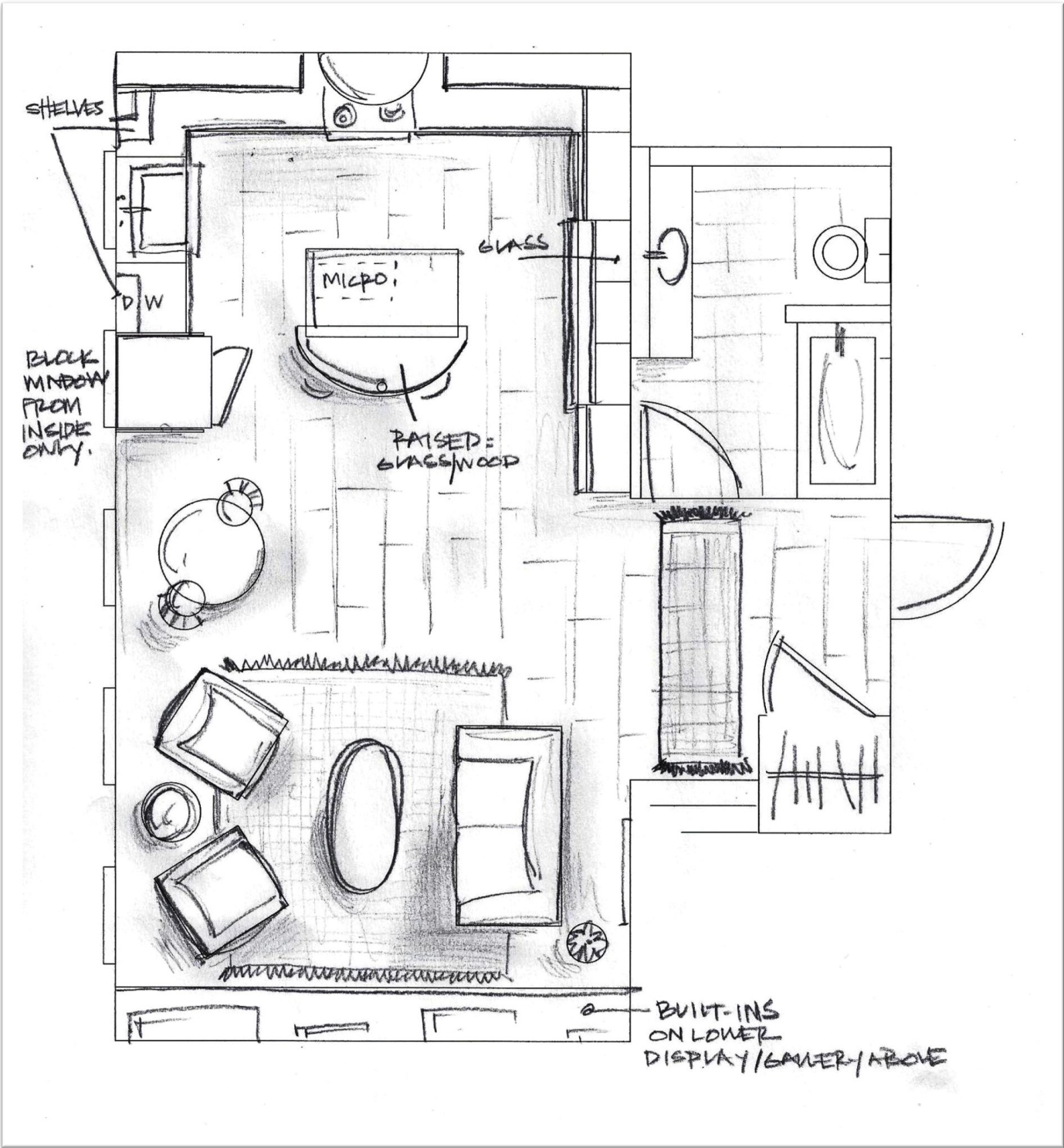




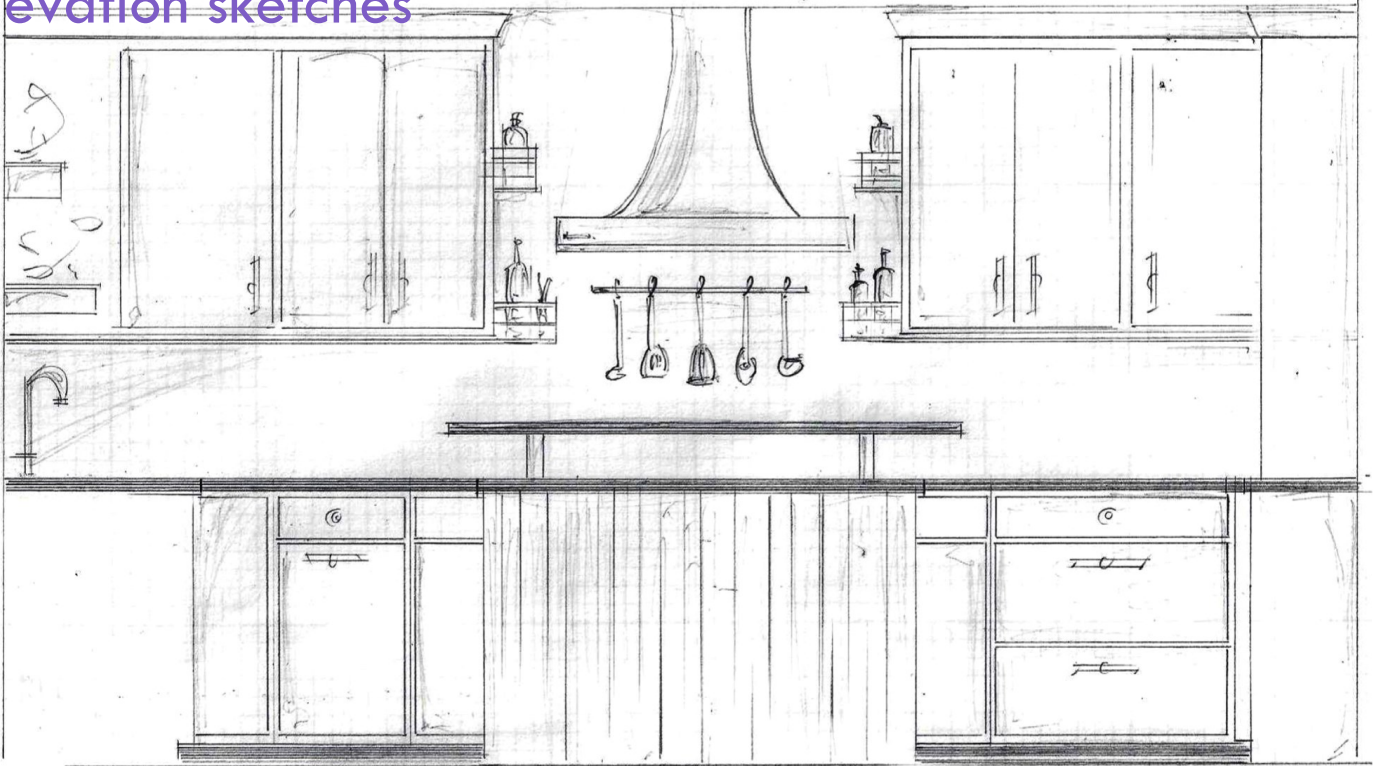
Conceptual Sketches:

Drawings for planning purposes. These sketches are completed to provide a visual for potential, design, construction or other planning related needs. One or a mix of these formats may be used during the discovery phase in order to provide the necessary visual support. For instance, if you are remodeling your kitchen and adjusting walls, the focus of your first session will be layout drawings. Upon selecting a layout, you would move into a session that would involve seeing elevation (wall) drawings. Conceptual sketches are essentially a way to “play on paper” and they are a great way to educate, experience and establish the direction of the project. All visuals completed will be built upon the framework and goals identified in the initial consultation. This will ensure the drawings provided offer solutions! While only a few visuals of each type are shown, your project will always include more than one, to ensure education and options for your needs.

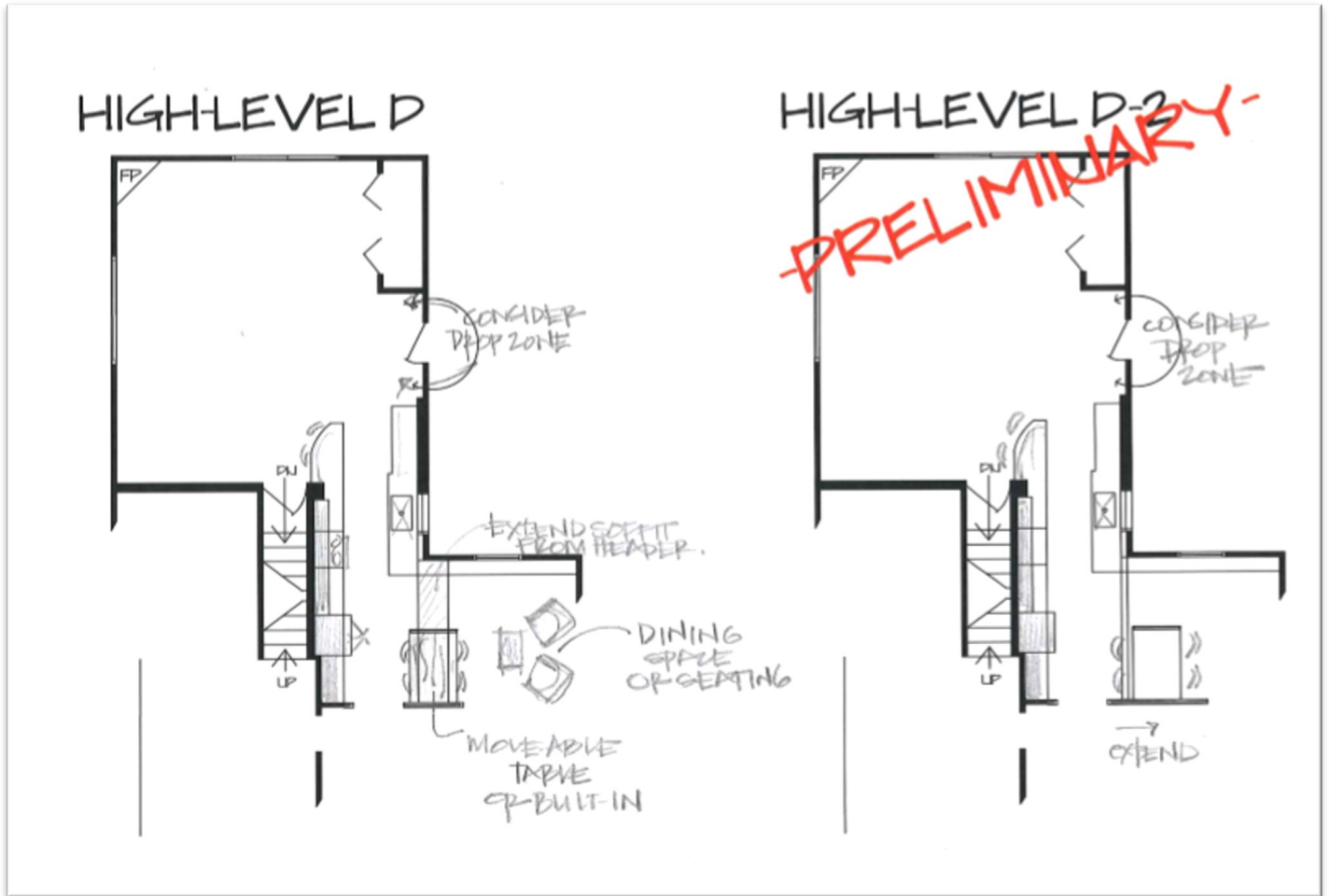
Layout drawing example



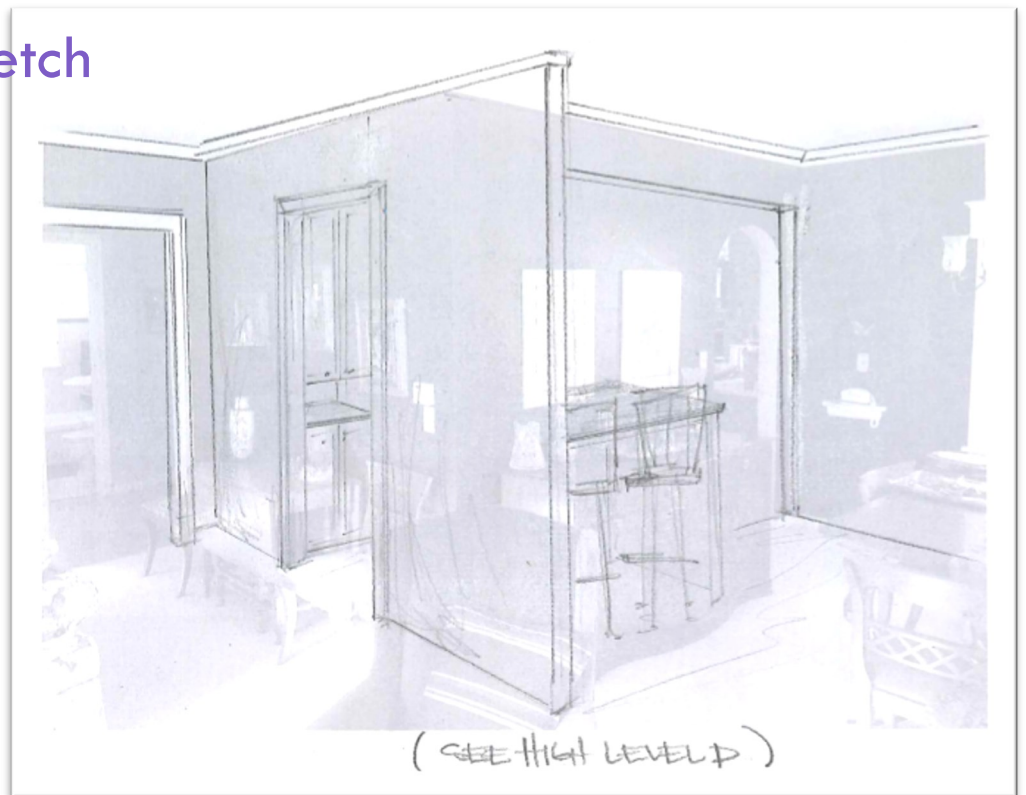
Elevation sketches



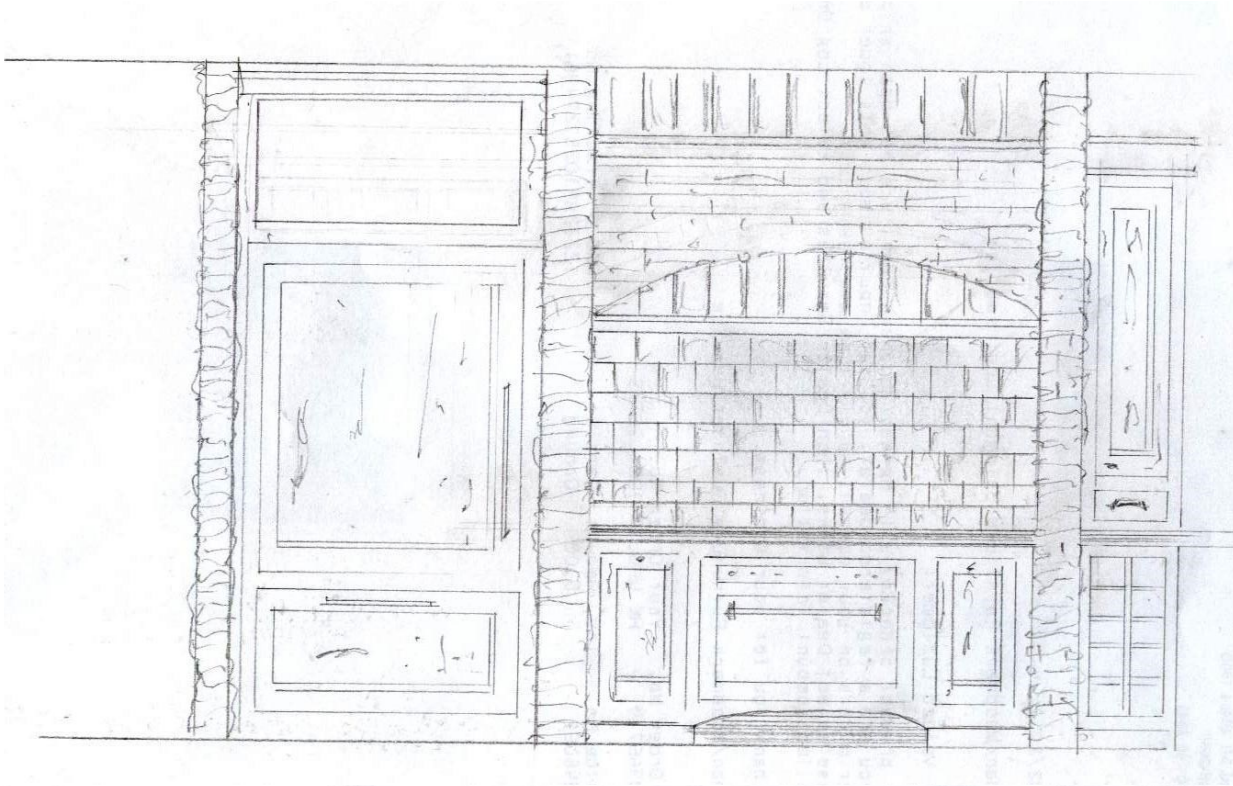
Layout drawings with perspective (3d) visual



Perspective Sketch



Elevation Sketch



Rendered Elevation with annotations



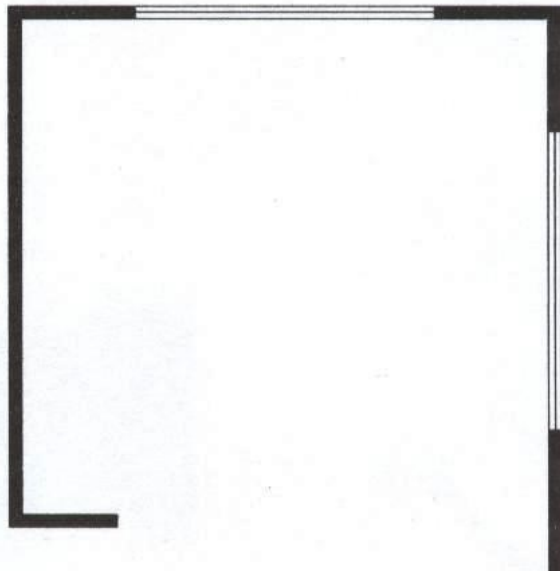
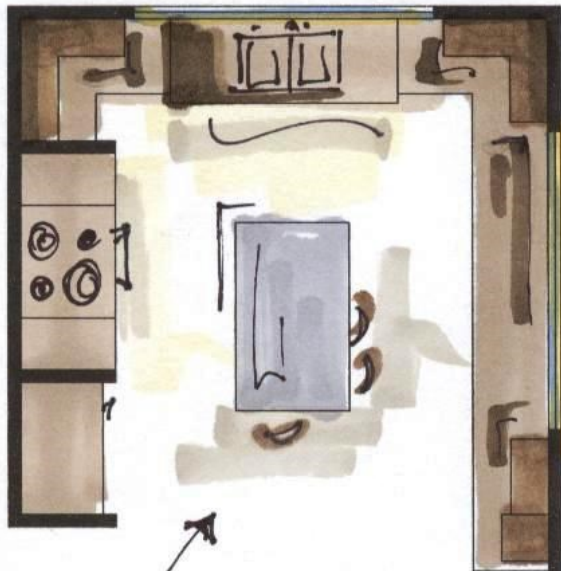
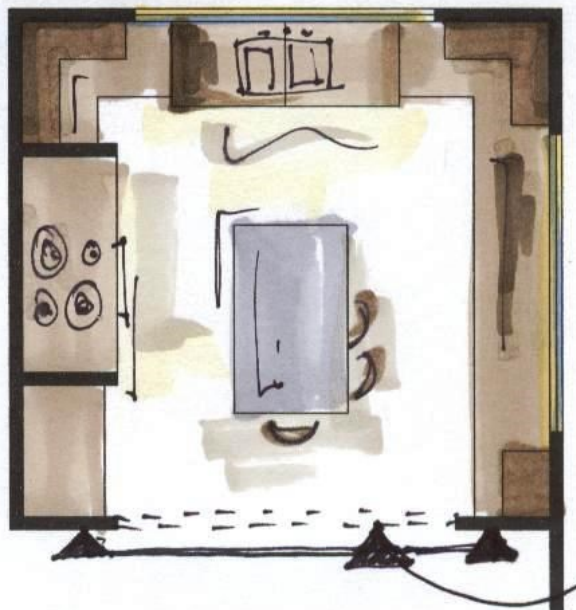
Perspective Sketch



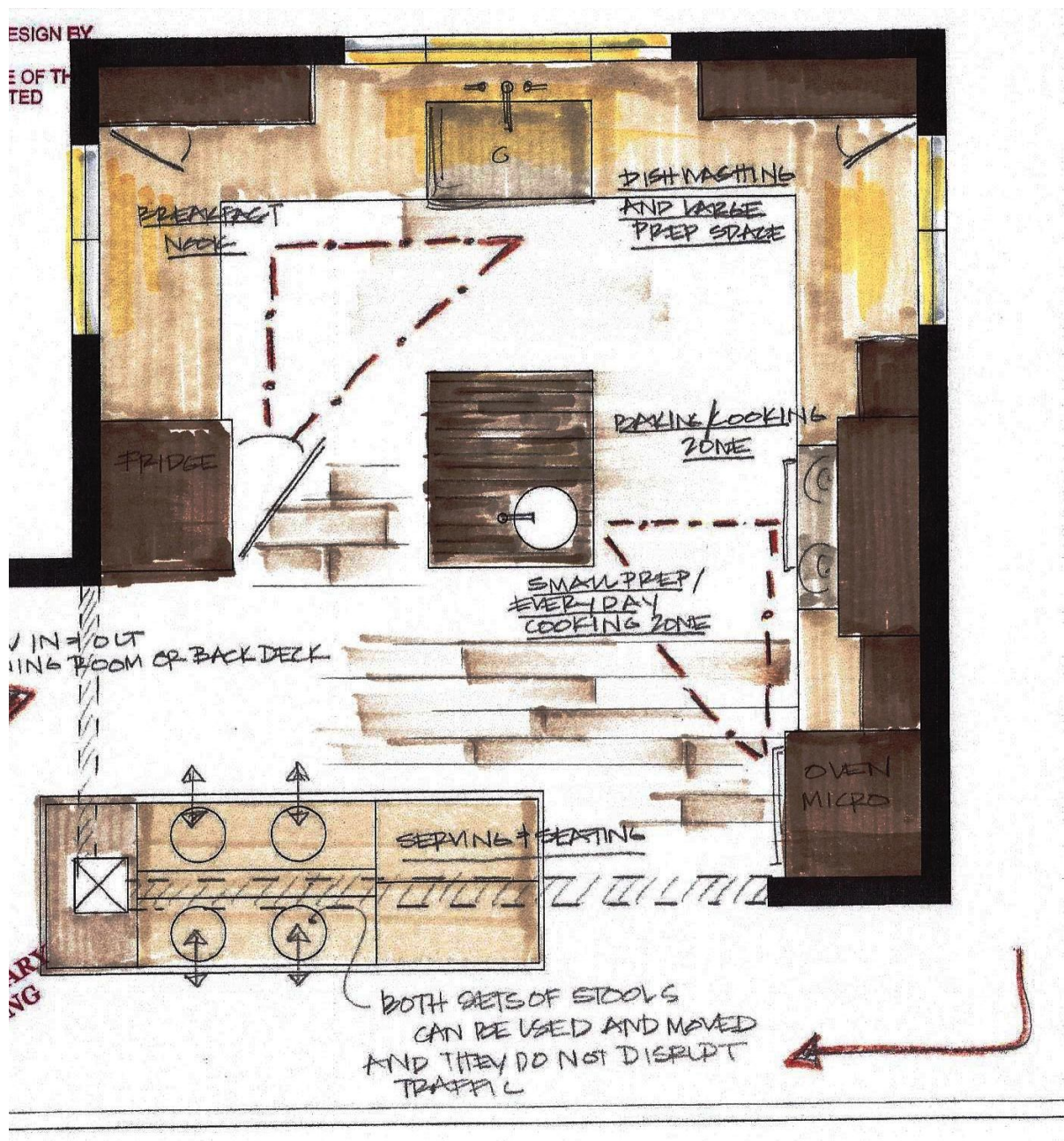
Rendered Perspective



Rendered Layout Drawings



Rendered and annotated layout drawing



Budget Estimate:

A quote that includes estimated costs for your project. The framework established in the initial consultation, budget conversations, and the conceptual design work are all taken into consideration when cost estimating so these numbers will be accurate to your specific project and the preliminary concept that is rendered from any conceptual design work. This estimate reflects materials and finishes needed for your project along with a verbal discussion of labor and installation costs. (A work session completed in the programming phase will provide exact costs) The budget estimate incorporates your individual needs, desires and expressed interests. The initial consultation, discovery assessment questionnaire, and conceptual design work are all additional layers that are added to provide you with an accurate bid

-HANNAM- DESIGN

PROJECT ESTIMATE: Kitchen Remodel

Date: 9/27/2019

Client: Jane and Jim Doe

2436 Greenwood Ave

Cedar Falls, IA

Cabinetry

Manufacture Great Northern, Deluxe Line

Wood Species: maple Finish: standard stain TBD

Face Frame Construction: full overlay or classic

Drawer Construction: 5/8 wood dovetail, Full Extension, silent glide system

Door Hardware: tbd, included Drawer Hardware: tbd, included

Cabinetry Features:

includes a complete cabinetry package based upon layout provided in workbook

includes additional cabinetry for bathroom vanity & linen door/frame and hall built-in

installation not included – by PDC

Estimated Cabinetry Costs: \$15,985-18,516.00

Countertop

HD laminate

includes countertop, template, fabrication, and installation

includes undermount sink allowance

includes faucet allowance

does not included plumbing labor – by selected plumber

Estimated countertop cost: \$ 5,250-6,120.00

-ADD an estimated 2,900-3,890 for mid-range granite or quartz

Other Known Costs to date

Decorative light fixtures allowance: \$ 450-550.00

Backsplash tile and installation allowance: \$ 1,250-1,950.00

Wood flooring and installation costs kitchen only: \$ 5,800-6,300.00

See attached sub-contractor bid for remaining labor and install costs

Appliances not included- purchased by homeowner

Technical Drawings:

Upon completion of the conceptual design session or sessions. We will move into a technical phase which includes a set of detailed and accurate technical documents that are buildable. These will visually communicate how the design will function and/or how it will be constructed. Technical drawings are essential for communicating ideas to industry contractors, builders and suppliers. Once a conceptual design plan has been approved, a technical drawing session can begin. Technical drawings are required to move a job from planning stages to progression and later implementation. They require an investment in time and money but are essential if project implementation is desired.

**Technical drawings are only buildable if Hannam Design is supplying materials or installation*

Programming Phase:

This begins the secondary portion of the design process, of which will be customized for you and others involved. *Because of your project's unique needs, it cannot be visually shown in an example. It will be detailed in your proposal under "future deliverables" and may include the following: additional layout drawings, vision boards, materials specifications, sourcing information, and supply details. Once final drawings are approved, materials selected, and necessary installation details figured, a final budget and sales agreement will be presented at the end of this programming phase. At this time, logged hours are no longer charged separately and included with your materials purchase. Once signed, ordering processes will begin. During this time we may need to finalize other job specific details for the sub-contactors so the job is ready once materials arrive. A customized timeline and communication log will be discussed for your project at this time and a full installation packet will be assembled for jobsite needs.